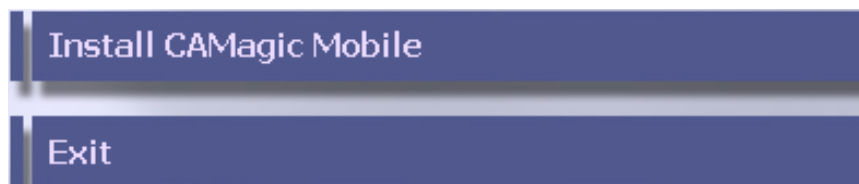


CAMagic Mobile for Bluetooth ~Quick Guide~

Note: Please make sure the driver is installed completely before installing CAMagic Mobile.

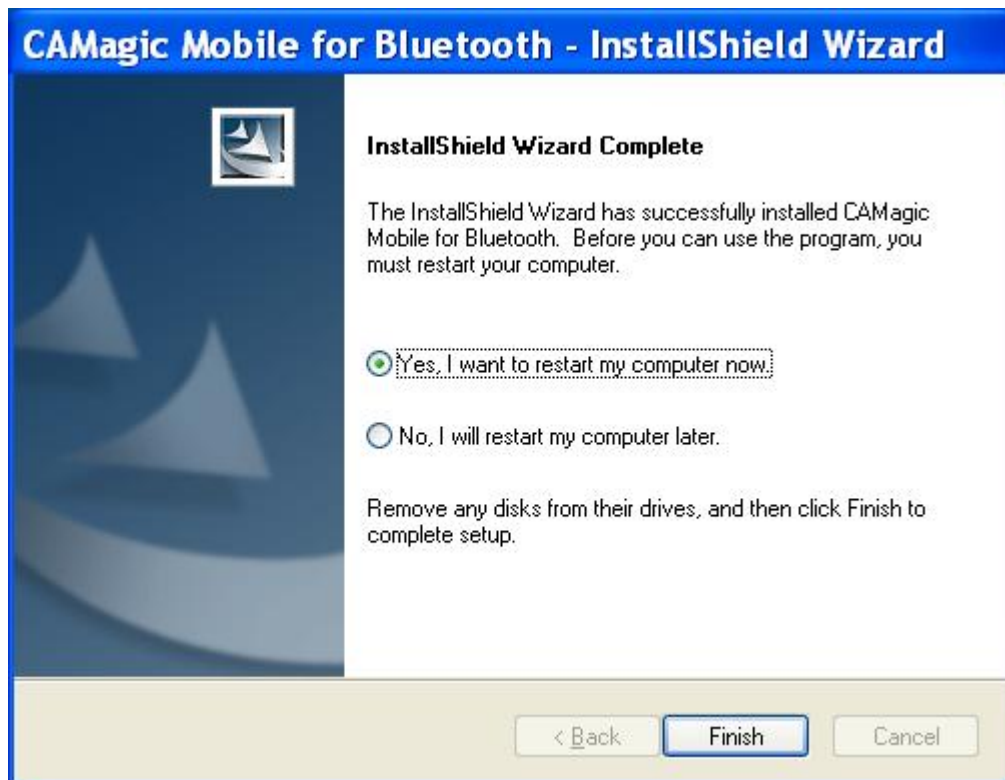
Install CAMagic Mobile

- A. For CD package: Insert the CAMagic Mobile Bluetooth Adapter Software Suite CD into the CD Drive of your computer. If the autorun window didn't appear, double-click Autorun.exe.
- B. For online package: Double-click Autorun.exe.



Step1. Click **Install CAMagic Mobile** on the main panel then follow the on-screen instructions for installation.

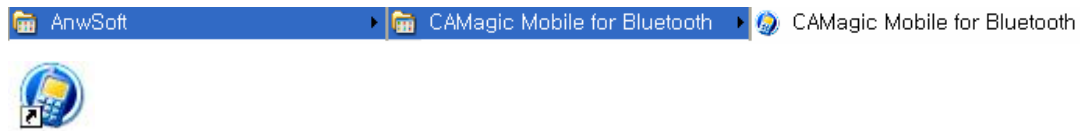
Step 2. Select **Yes** to restart your computer then click **Finish**.



Use CAMagic Mobile

You can launch the CAMagic Mobile for Bluetooth application from the Start Menu or

by clicking the CAMagic Mobile for Bluetooth icon on the desktop.



Next, you'll see the window for pairing:

Note: Before pairing, please make sure

- 1. the Bluetooth dongle has been properly plugged into your computer.**
- 2. if you do not know how to operate the Bluetooth function of your handset, check with your handset manual first.**

Step 1. Click **OK** to move on to next step. It will start searching the available mobile phones.



Step 2. After searching mobile phones, select the phone model you'd like to pair

then click "**Pairing device**"  in the Tool Bar.

Step 3. To begin the pairing process, you can take the default PIN Code(1234) or enter your own PIN Code, click on **Pair** and then follow the on-screen instruction on your handset to continue.



Note: When you see the request of entering passkey on your handset, enter the PIN Code you've chosen above.

Step 4. Click "**Set as default connection handset**"  in the Tool Bar to get connected to your handset.

Step 5. After the phone is connected, the process has completed. You can click

"**Back to Main Panel**"  for operating the application.